



RÄTTSMEDICINALVERKET



Medical age assessment

– this is how it is done

You have applied for protection in Sweden and you are required to present your identity. Your name, when you were born and where you come from are part of who you are - your identity.

An asylum-seeker who is aged under 18 years is regarded as a child under Swedish law. You thereby have special rights, including the right to a trustee, healthcare and education. Adults have to take what you say into account when they take decisions that concern you.

If you have no documents that show how old you are, you are able to have a medical age assessment done to support the age you have told us you are.

In Sweden, all young people

under the age of 18

have the right to go to school.



Yes or no

Having a medical age assessment done is voluntary. That means you do not have to have it done if you do not want to. If you want to have a medical age assessment done, you must provide written consent that you and your trustee must sign.

You can change your mind and withdraw your consent. If you want to change your mind, your trustee will contact the Swedish Migration Agency. You and your trustee can do that at any time until the National Board of Forensic Medicine has sent its answer, a forensic medical statement about age, to the Swedish Migration Agency.

Two examinations

Two examinations will be done as grounds for the medical age assessment.

You will need to go to a dental clinic where your wisdom teeth will be X-rayed. The dentist will be able to see from the pictures how far developed your teeth are.

You will also need to go to an X-ray clinic where one of your knee joints will be examined with an MRI scanner. A radiologist doctor will investigate whether your knee joint has stopped growing.

These examinations will not cost you anything.

Usually, an interpreter is not needed for the examinations. If you need an interpreter, you can say so at the same time as you book an appointment for the examinations.



X-ray images of wisdom teeth and

MRI pictures of a knee joint

are part of the medical

age assessment.

The assessment

People who are over 18 usually have fully developed wisdom teeth and their knee joints have stopped growing. For people under 18, these parts of the body are still developing.

Forensic medical statement

After the examinations and assessments of the wisdom teeth and knee joint, a forensic doctor will write a statement about your age. This is called a forensic medical statement about age.

It is not possible to say exactly how old a person is. The statement is an assessment of whether you are over or under 18 years of age.

The National Board of Forensic Medicine will send the statement about age to the Swedish Migration Agency.



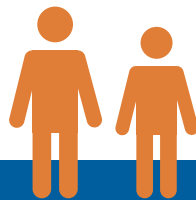
A forensic doctor will write
a statement about
your age. This is called a
forensic medical statement about age.

Important information prior to your MRI examination

Before your knee joint is examined, it is important the healthcare staff are informed of whether you have any metal in your body, for example, screws after an operation or metal fragments. In that case, there are risks involved in having an MRI scan done. You will be asked to fill in a questionnaire before you can do the examination.

The examination is not dangerous for you or your health and it does not hurt. It takes about 5–10 minutes. In order for the examination to give a good result, it is important you lie completely still. You must not have any metal in your clothes when you do the examination. You will have to take off your trousers and shoes. Girls should not wear a wired bra.

The machine is noisy so you will listen to music with earplugs.



You must take the following things to the examinations:

- The letter that was sent to you with instructions
- The questionnaire you were asked to fill in before the MRI scan
- Your LMA card
- Your trustee must go with you to the examinations and must be able to present his/her identity.

STEP BY STEP:

Medical age assessment



The Swedish Migration Agency informs you that you have the possibility of doing a medical age assessment.

You, together with your trustee, can say either yes or no.

1



2

If you say yes, you give written consent to the Swedish Migration Agency.

Your trustee must also sign the form.



The Swedish Migration Agency orders a medical age assessment from the National Board of Forensic Medicine.

3



4

You get two letters of instruction from the National Board of Forensic Medicine.

They contain information about where and how you make appointments for the examinations. Your trustee also receives these letters.

You and your trustee book appointments for the examinations. They are not done at the same time.



Your wisdom teeth are X-rayed. Your trustee goes with you.

5



6

One of your knee joints is examined with an MRI scanner. Your trustee goes with you.





Two dentists look at the X-ray pictures of your wisdom teeth and each dentist does an individual assessment of the development of your teeth.

7



The result is sent to a forensic doctor at the National Board of Forensic Medicine.

9



The National Board of Forensic Medicine sends the statement to the Swedish Migration Agency.



11



8

Two radiology doctors look at the MRI pictures of your knee joint and each of them does an individual assessment of the development of your knee joint.



10

The forensic doctor looks at the material and the assessments that have been made. The forensic doctor then writes a forensic medical statement with an assessment of whether you are under or over 18.



12

The Swedish Migration Agency uses the statement from the National Board of Forensic Medicine about your age, together with other information about your age that you have provided, to assess your application for asylum.

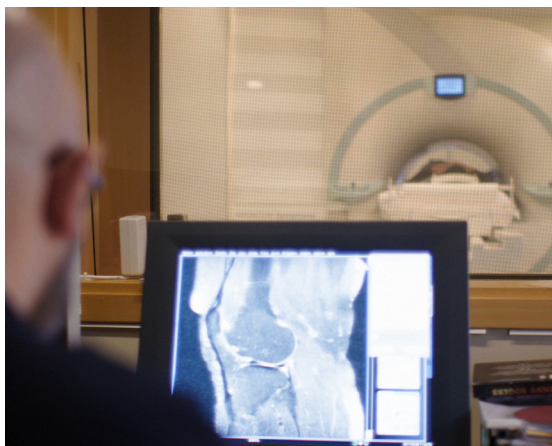




See the film about medical

age assessment at

www.rmv.se



RÄTTSMEDICINALVERKET

www.rmv.se